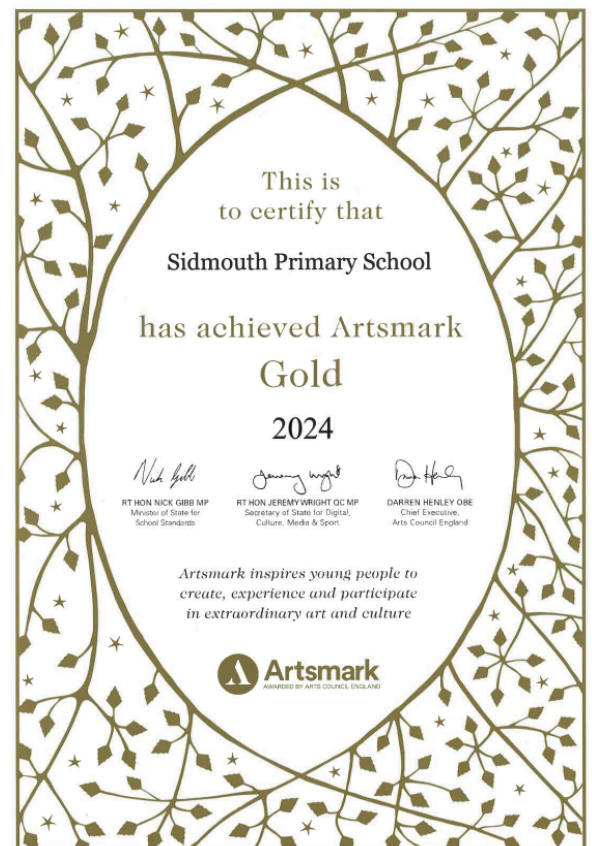


NEWSLETTER FOR SIDMOUTH PRIMARY SCHOOL

This week we are celebrating at Sidmouth after receiving the prestigious Artsmark GOLD Award.

The Artsmark Award is the only creative quality standard for schools, accredited by Arts Council England. It supports schools to develop and celebrate arts and cultural education, putting creativity and wellbeing at the heart of the curriculum. Artsmark ensures every young person can be creative and access a diverse, high-quality cultural education.

In order to achieve their Artsmark Award, Sidmouth had to develop their arts and culture provision to embed a broad and ambitious curriculum. This was achieved by creating an overall plan that was committed to and delivered across the whole school. Special thanks must go to Mr Matthews who coordinated our work towards this award.




This week as part of their new history topic Year 4 children had a visit from Mary Murdoch. The children had a great time asking Mary questions and learning all about this influential Historical women's life and her links with Hull. Mary Murcoch accomplished many things in her life, she was Hull's first female doctor and the founder of the Hull Women's Suffrage Society. She was also the first woman in Hull to own a car, which she reportedly drove very fast! Her legacy is still present in Hull there is a blue plaque on her home in Park Street and more recently the new bridge on Castle street was named after her.

New School Menu

We recently shared with you all our new school menu which started on 9th April 2024. This new menu has been well-received by the children who are enjoying trying some different meals at school. Our school menu is always available to view on our [website](#), and we have included an image below to help children be prepared for what days they would like to bring a packed lunch from home.

School meals are free for children in Reception, Year 1 and Year 2. The meals for children in Years 3 to 6 have remained at just £1* per meal - I'm sure you can agree this is great value for the variety on the menu!




*the £1 fee is covered by Hull City Council for families that are entitled to Free School Meals. If you have not yet applied, and think you may be eligible, please do so via their [website](#) as this could save you up to £180 per year per child!



School Menu
April - October 2024

For Allergens see numbers in brackets next to each dish and refer to Allergens

1 GLUTEN	6 SOY	11 MOLLUSCS
2 NUTS	7 FISH	12 LUPINS
3 EGG	8 CELERY	13 PEANUTS
4 SESAME	9 CRUSTACEAN	14 SULPHITE
5 MILK	10 MUSTARD	

Healthier Options   

thrive
co-operative learning trust

Week Commencing: 08/04, 22/04, 06/05, 20/05, 03/06, 17/06, 01/07, 15/07, 02/09, 16/09, 30/09, 14/10

Week 1	Monday	Tuesday	Wednesday	Thursday	Friday
Choice 1	Chicken Kebab Pilau Rice	Sausages (1,14) Yorkshire Pudding (1,3,5)	Homemade Pizza & Toppings (1,5)	Roast Chicken Stuffing (1,5,8)	Fish Fingers (1,7)
Choice 2	Vegetable Kebab (1,6) Pilau rice	Vegan Sausages (1)	Homemade Pizza & Toppings (1,5)	Quorn Fillet (1)	Homemade Patties (1,3)
Sides	Homemade Bread (1,3,5) Coleslaw (3,5,10) Peas/Sweetcorn	Mashed Potato (5) Carrots Peas	Diced Potatoes Peas/Sweetcorn Coleslaw (3,5,10)	Roast Potatoes Carrots Broccoli	Chips Baked Beans Mushy Peas
Dessert Choice	Oreo Brownie (1,3,5,6)	Banana Flapjack (1)	Chocolate Orange Sponge (1,3,5) & Custard (5)	Cranberry & Oat Biscuits (1,5)	Assorted Cookies (1,3)

Jelly, Fresh Fruit or Yoghurt's (5) are also available.

Week Commencing: 15/04, 29/04, 13/05, 10/06, 24/06, 08/07, 09/09, 23/09, 07/10, 21/10

Week 2	Monday	Tuesday	Wednesday	Thursday	Friday
Choice 1	Pasta Bolognese	All Day Breakfast Bacon/Sausage (1,3,5,14), Omelette/Beans or Tomato	Chicken Korma (5) 50/50 Rice	Roast Turkey Yorkshire Pudding (1,3,5)	Kandos Chicken Rice Baked Beans
Choice 2	Tomato & Basil Pasta (1,5)	All Day Breakfast Vegan Sausage (6) Smiley Faces / Beans	Squash & Coconut Curry (10) 50/50 Rice	Vegan Sausages (1,6,14)	Kandos Quorn Fillet Rice Baked Beans
Sides	Garlic Bread (1) Pasta (1) Coleslaw (3,5,10)	Homemade Bread (1,3,5)	Naan Bread (1) Peas/Sweetcorn	Broccoli Carrots Mashed Potato (5)	Salad Coleslaw (3,5,10)
Dessert Choice	Cranberry Crunch (1,3) & Custard (5)	Raspberry Muffin (1,3,5)	Chocolate Hedgehog (1,5)	Ice Cream Fruit (5)	Crispy Cakes (5,14)

Jelly, Fresh Fruit or Yoghurt's (5) are also available.

Available everyday	Freshly prepared assorted filled Sandwiches/Rolls/Wraps (1,3,5,6,7)
	Jacket Potato served with choice of fillings Baked Beans, Grated Cheese (5) or Tuna Mayonnaise (3,7)
	Fresh Daily Salad

It is important that all school meals are paid for promptly by parents; the easiest way to do this is via Arbor. If you have not used Arbor before, or are unable to log in on the app, please come to Reception with your phone so we can assist you.

Picture News



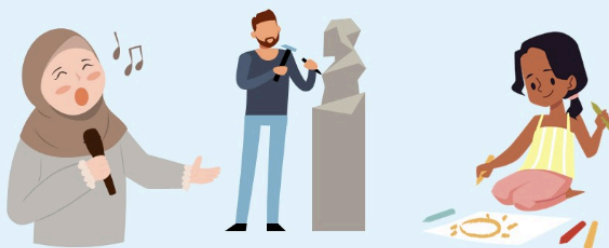
This Week's Story

A new artwork, from the mysterious street artist Banksy, appeared in North London overnight in March. The artwork shows green paint sprayed on a wall behind a cut-back tree to look like greenery with a stencil of a person holding a spray can next to it. In the days following its creation, it was covered in plastic and surrounded by wooden boards to protect it. The local council, Islington, has added a frame around the site, which has plastic panels to allow people to view the artwork, whilst ensuring its protection.

Reflection



Art can be anything created with imagination that expresses important ideas or feelings. It can mean something different to each one of us.



Things to talk about at home...

- > Share your experience of graffiti. Is there any in your local area?
- > What is your definition of art?
- > Do you like creating art? If so, what type?

Mutual Respect and Tolerance

We understand that people have different preferences and opinions in relation to art. It is important to respect the opinions and preferences of others.

© Picture News 2021



Whole School Attendance to Date:
94.3%

Attendance - Every Day Counts

	Class Name	Attendance Percentage
1	Cowell	100%
2	Dahl	97.8%
3	Rosen	97.2%
3	Jeffers	97.2%
5	Pullman	94.8%
6	Rowling	94.3%
7	Browne	93.1%
8	Blackman	91.3%
9	Child	91.1%
10	Fine	91.0%
11	Donaldson	90.3%
12	Wilson	89.9%
13	Potter	87.9%
14	Carle	84.7%

The table opposite shows you the attendance for the week ending 19th April 2024.

We are aiming for all children to have 97% attendance. Well done to all classes that have achieved this.

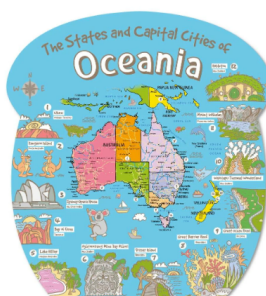
Remember, to maximise your potential, you have to be here everyday,

ATTENDANCE	DAYS MISSED	LESSONS MISSED
100%	0 DAYS	0 LESSONS MISSED
99%	1 DAY	5 LESSONS MISSED
98%	3 DAYS	15 LESSONS MISSED
97%	1 WEEK	25 LESSONS MISSED
96%	1.5 WEEK	37.5 LESSONS MISSED
94%	2 WEEKS	50 LESSONS MISSED
93%	2.5 WEEKS	62.5 LESSONS MISSED
92%	3 WEEKS	75 LESSONS MISSED
90%	3.5 WEEKS	82.5 LESSONS MISSED



Have you seen the new maps we have added to our playground walls this week?

The children will be able to use these maps to help develop their geography skills and knowledge.



Upcoming Diary Dates

Mon 6th May	Bank Holiday - school closed to pupils
Tue 7th May	SEND Coffee Morning
Mon 13th to Thu 16th May	Y6 SATS Week
Fri 17th May	Y5 Hands on History trip - letter attached
Mon 20th May	School Photo Day - individual and class
Mon 27th to Fri 31st May	Half term break - school closed
Tue 4th June	SEND Coffee Morning
Thu 6th June	Y2 Streetlife Museum trip - more information to follow
Mon 17th June	Y4-6 Sports Day - more information to follow
Fri 21st June	Y1-3 Sports Day - more information to follow
Tue 2nd July	SEND Coffee Morning
Wed 10th July	Y4 Connexin Live trip - more information to follow
Fri 19th July	Last Day of the Summer Term - school closes at 2pm
Mon 22nd Jul to Fri 30th Aug	Summer Holidays - school closed

2024-2025 Term Dates

Mon 2nd September	INSET Day - school closed to pupils
Mon 28th Oct to Fri 1st Nov	Half term break - school closed
Fri 20th December	Last day of Autumn Term - school closes at 2pm
Mon 23rd Dec to Fri 3rd Jan	Christmas Holidays - school closed
Mon 6th January	INSET Day - school closed to pupils
Mon 17th to Fri 21st February	Half term break - school closed
Fri 4th April	Last day of Spring Term - school closes at 2pm
Mon 7th to Fri 18th April	Easter Holidays - school closed
Mon 21st April	Bank Holiday - school closed
Tue 22nd April	INSET Day - school closed to pupils
Mon 5th May	Bank Holiday - school closed
Mon 26th to Fri 30th May	Half term break - school closed
Fri 18th July	Last Day of the Summer Term - school closes at 2pm